

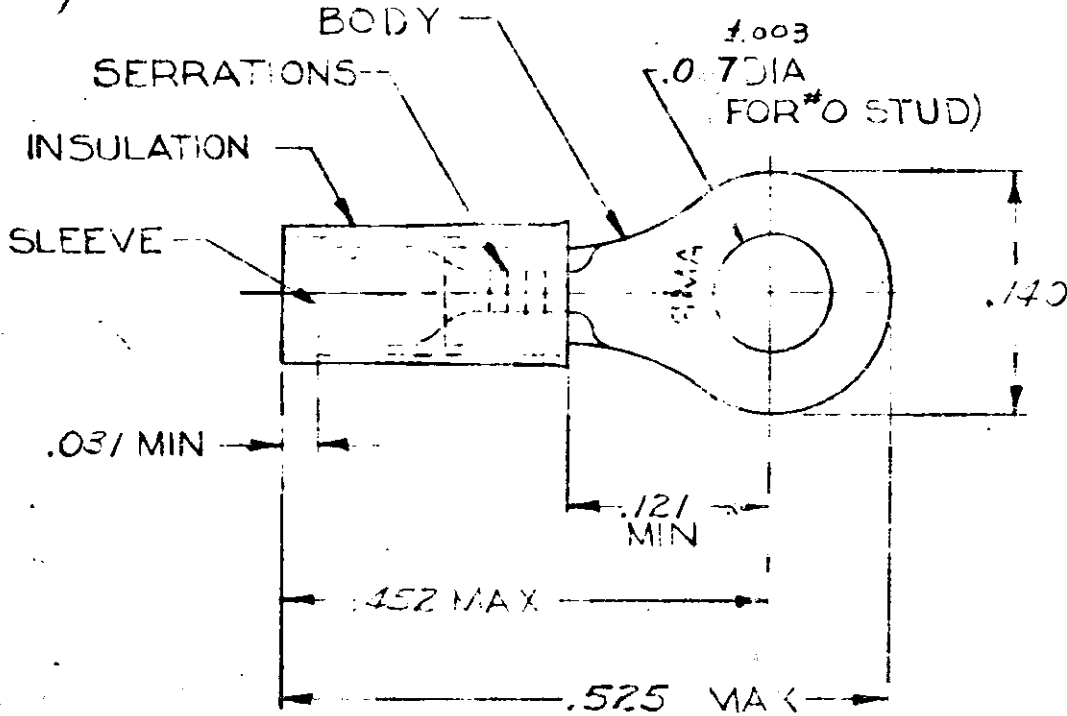
DRAWING MADE IN AMERICAN PROJECTION

PRINT COPY
G 14

©1952 BY AMP INCORPORATED. ALL RIGHTS RESERVED. AMP PRODUCTS COVERED BY PATENTS AND/OR PATENTS PENDING.

REVISIONS

LTR	DESCRIPTION	DATE	APPROVED
J	REV PER F 572	11/20/68	[Signature]
G	REV PER EN F 572	10/2-71	[Signature]
H	OBSOLETE REV 3-591	10-20-81	[Signature]



FOR .050 TO .082 WIRE INSULATION DIA.
TONGUE MATERIAL THK = .018 ± .002

1	321013 ON TAPE	OBSOLETE 321013	BODY: COPPER (QQ-C-576) TIN PL (MIL-T-10727)
1	WIRE TERMINAL	321013	SLEEVE: COPPER (QQ-C-576) INSULATION: YELLOW NYLON
QTY	DESCRIPTION	PART NO.	MATERIAL & FINISH
UNLESS OTHERWISE SPECIFIED DIMENSIONS ARE IN INCHES TOLERANCES ON: DECIMALS ± .008 ANGLES ± 5°		CONTRACT NO. 3-17-70	AMP INCORPORATED HARRISBURG, PENNSYLVANIA
MATERIAL SEE TABLE		CHK: [Signature] 3-20-70 APPD: [Signature] 3-20-70 REF: [Signature] 3-23-70	
OTHER APPD		SIZE A	CODE IDENT NO. 00779
		NUMBER 321013	
		SCALE NTS	SHEET LOE1